

1 Drew Street Wembley WA

3  1  2 

This charming circa 1950 home is a delightful three-bedroom, one bathroom residence situated on a level block spanning 670sqm. Its ideal location offers close proximity to numerous amenities and highlights of the thriving suburb, making it a rare gem in the current market.

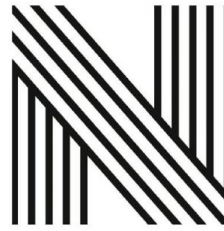
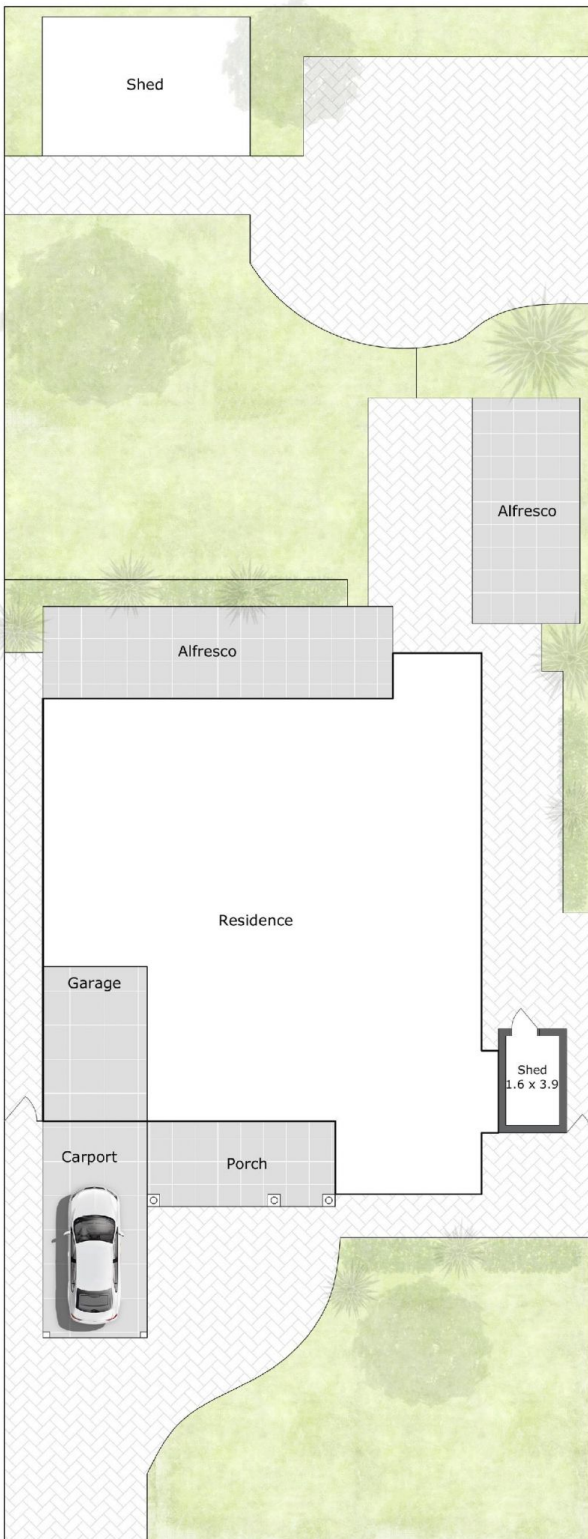
The property presents an excellent opportunity to build or renovate. Its original design features a generous front lounge room and main bedroom, that leads to kitchen/dining, bedroom 2 and bedroom 3/activity room. The convenient living area towards the rear of the property, overlooking a huge backyard, provides an excellent space for entertaining family and friends.

Take advantage of the magnificent Lake Monger cycle and running paths by day and enjoy the vibrancy of nearby Leederville and Subiaco by night. You can't go wrong with

Price : \$ 1,255,000
Land Size : 670 sqm
View : <https://www.networkexchange.com.au/sale/wa/western-suburbs/wembley/residential/ho use/7589604>



Mimma Notaro
08 9388 3335

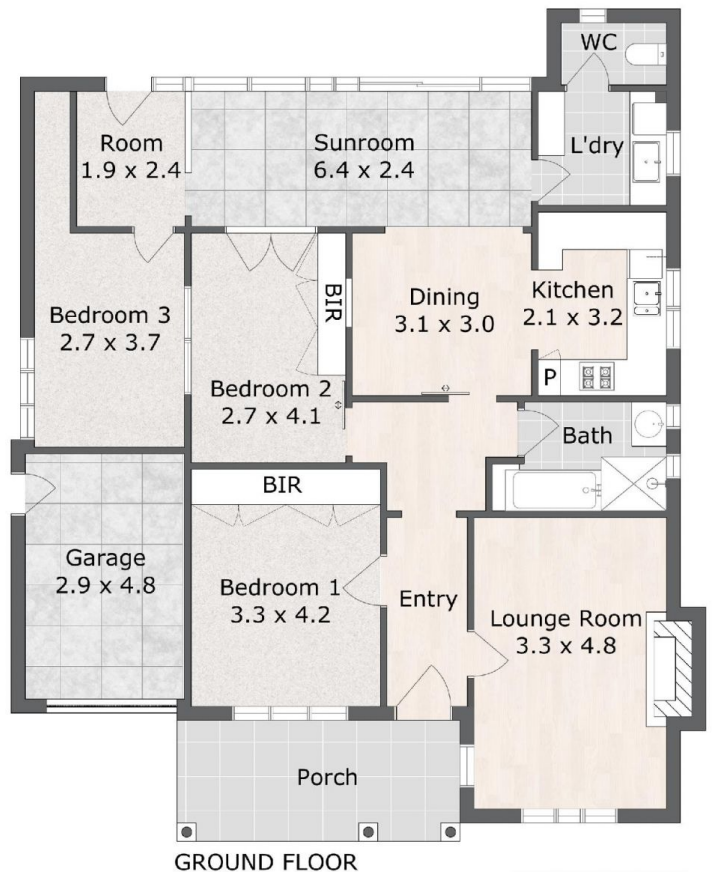


**NETWORK
EXCHANGE
REALTY**

Approximate Areas:

Ground Floor	142 m ²
Alfresco	18 m ²
Garage	13 m ²
Porch	11 m ²
Shed	8 m ²

Total 192 m²



FINESSE

1 Drew Street, Wembley, WA 6014



Care has been taken to ensure the accuracy of this floor/site plan, however all dimensions and areas should be considered as approximate. It has been produced as a guide for the purpose of the property sale or lease only. No credit is taken for the original building or landscape design. This floor plan/site plan design is subject to strict copyright and should not be reproduced, copied or altered without prior consent. The Agent, Vendor & Finesse Photography will not be held liable or responsible for any error, omission, misstatement or use of any data shown on this plan.