



2/443 Rokeby Road Shenton Park WA

2  **1**  **1** 

...with open plan living area and a gorgeous private courtyard? Here it is!

Tucked away in a small complex of 6 apartments is this delightful two-bedroom apartment with a very spacious English inspired garden/courtyard. Located in a central part of Subiaco/Shenton Park, close to Kings Park, transport to the CBD and UWA and walking distance to Subiaco's shopping precinct and the exciting cafés and restaurants that Subiaco has to offer.

The apartment has a stunning kitchen a - culinary delight. Black granite bench tops, white gloss cupboards with heaps of storage and heaps of overhead cupboards with lighting. There is an internal laundry - New York Style - with loads of cupboard space. The bathroom has a shower, bath and marble bench tops, neutral in colour and very modern. A bathroom of luxury!

Price : \$ 670,000

View : <https://www.networkexchange.com.au/sale/wa/western-suburbs/shenton-park/residential/apartment/7424286>



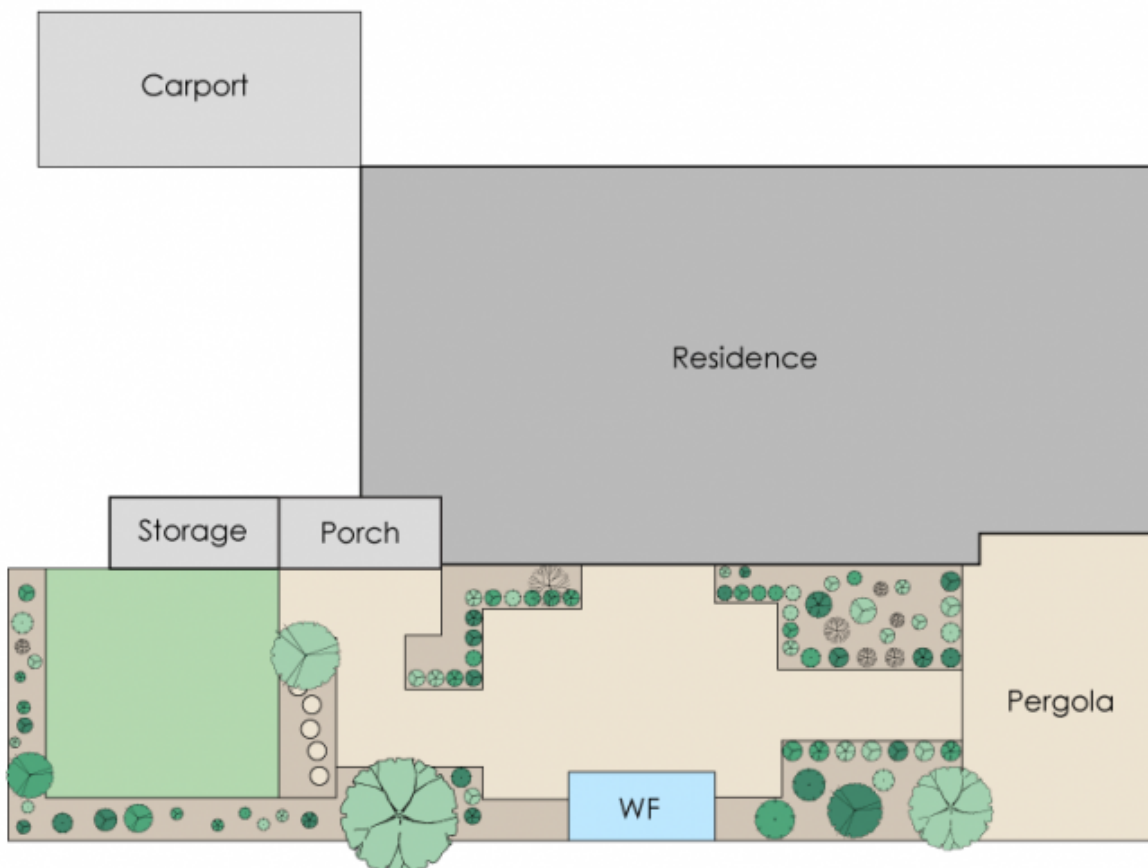
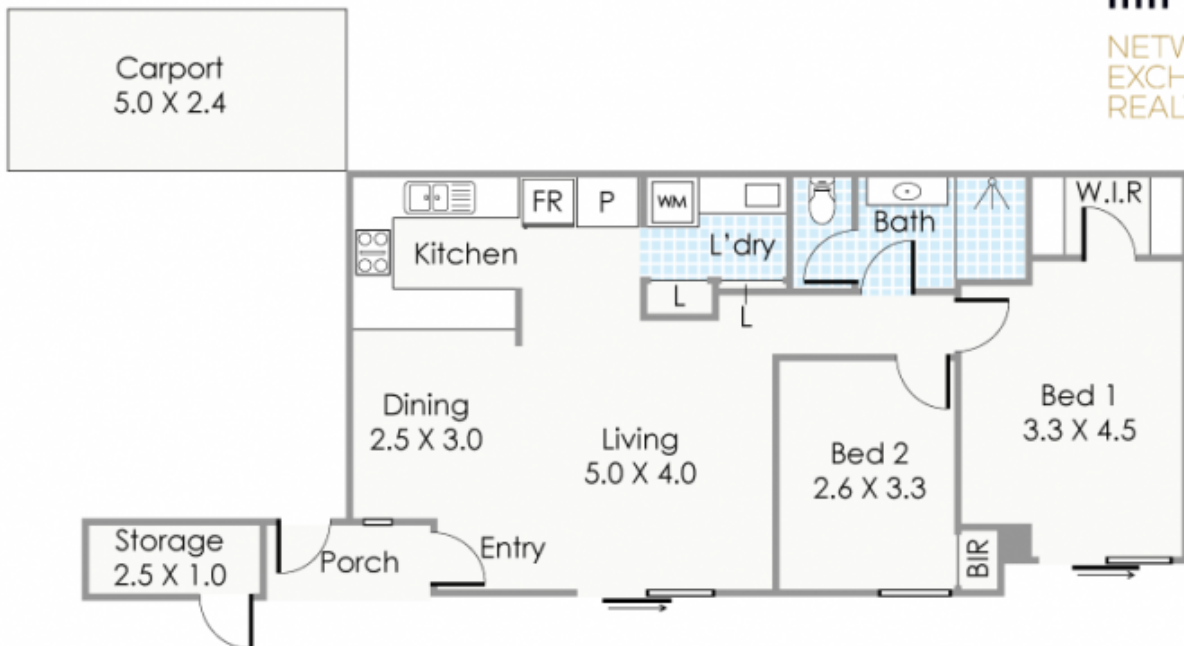
Mimma Notaro
08 9388 3335



Margo Coufos
08 9388 3335



NETWORK
EXCHANGE
REALTY



Approximate Areas

— Residence: 87m²

Total Area: 87m²

This floorplan is for illustration purposes only to show the layout of the property. Whilst every effort has been made to ensure the accuracy of this floor plan, all measurements, and any other information shown are an approximate interpretation only. Measurements and total areas do not include or account for wall thickness or roof area under eaves. Cfb Creative will not be held liable or responsible for any error, omission, misrepresentation or use of any information shown on the final floor plan. Not to be used for any other purpose.
www.cfbcreative.com.au



2/443 Rokeby Road, Shenton Park