

3A Aliffe Street Morley WA

5 🏠 2 🚗 2 🚗

Built in 2018 by Shelford Quality builders on 533sqm, this home situated in a prime location delivers everything you could ask for in a modern, stylish and spacious family home. Discover a sense of beautiful balance as multiple living zones come together in tranquil poise and offering a relaxing sense of openness.

Building Size : 300 sqm
Land Size : 533 sqm
View : <https://www.networkexchange.com.au/sale/wa/northern-suburbs/morley/residential/house/5723526>

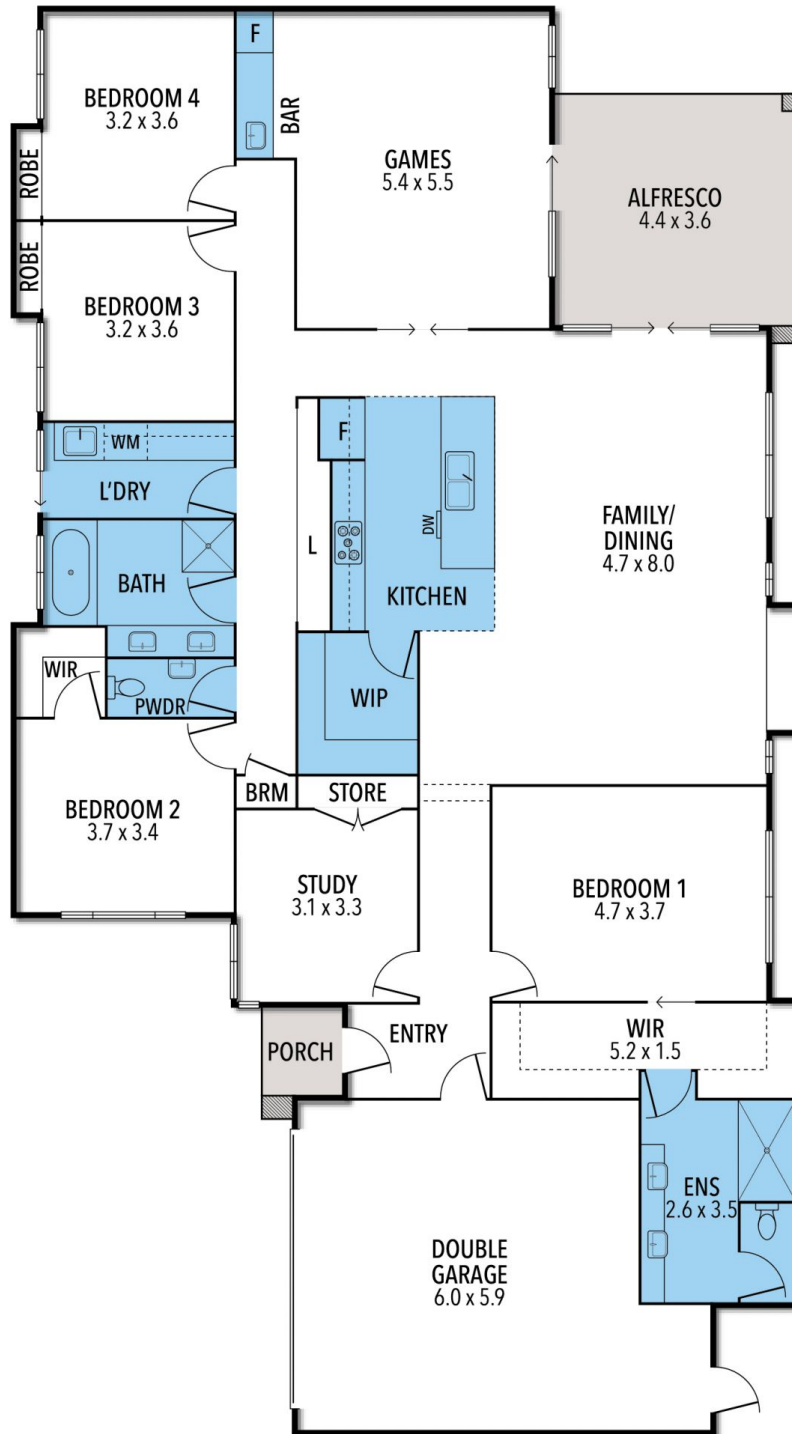
Featuring a voluminous master suite plus 4 spacious bedrooms and elegant bathrooms. Immersed in connected family living, with each zone cleverly laid out to provide just the right level of integration and separation. The kitchen alone is a social hot spot, with an expansive island bench and smart hub inspiring conversation and connection. Feel right at home in a design that caters for everyone's needs, from the designer kitchen, huge walk in pantry, to the enormous games room where you can entertain family and friends.



Mimma Notaro
08 9388 3335



NETWORK
EXCHANGE
REALTY



AREA & PERIMETER

HOUSE	239.6 m ²	ALFRESCO	17.8 m ²
GARAGE	40.5 m ²	TOTAL AREA	300.1 m ²
PORCH	2.2 m ²	PERIMETER	76.9 m

3A ALIFFE STREET, MORLEY

THE ABOVE PLAN IS AN ARTIST'S IMPRESSION ONLY, IT INCLUDES ELEMENTS THAT ARE FOR DISPLAY PURPOSES ONLY AND MAY NOT BE TO SCALE.
LANDSCAPING SHOWN IS INDICATIVE ONLY. DIMENSIONS ARE APPROXIMATE.

WWW.PUTRAINDRAWAN.COM