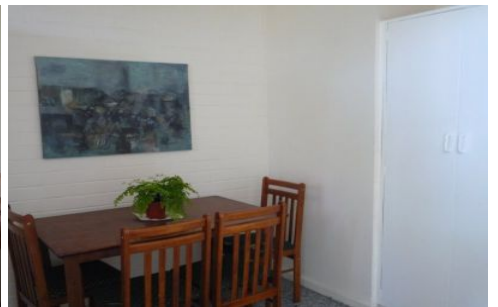




NETWORK
EXCHANGE
REALTY



28/100 Subiaco Road SUBIACO WA

1 1

This unfurnished one bedroom top floor unit has open plan meals and family area plus balcony. Includes fridge and cooler.

It is ideally situated in premium position opposite Mueller Park, in central, tranquil location and only minutes from the CBD.

Subiaco cafes, restaurants and Rokeby Road shopping precinct along with sporting events close by.

Walk to Perth Modern School, Princess Margaret Hospital and Subiaco Oval or the convenient access to West Leederville and Subiaco railway stations.

CALL FOR INSPECTION - BY APPOINTMENT

Mimma Notaro

Mobile: 0404 042 778

View : <https://www.networkexchange.com.au/lease/wa/western-suburbs/subiaco/residential/unit/5723334>



Mimma Notaro
08 9388 3335